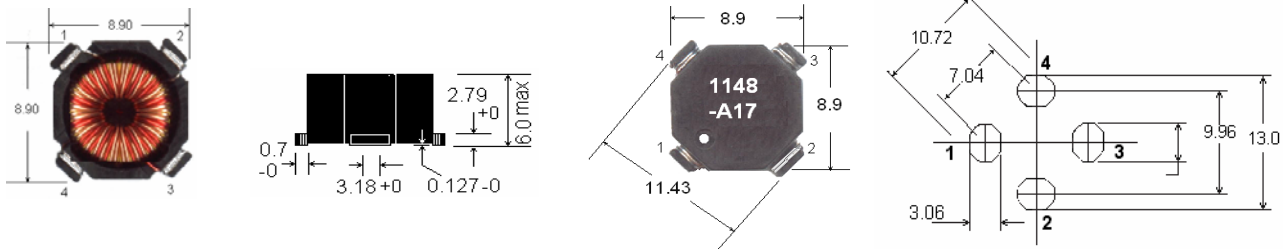
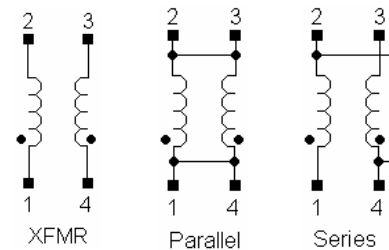


MTC1148-A Series, Dual SMT magnetic that can be used single or coupled inductors also can be used To 1:1 transformers (Provide isolation between two windings), The series used low loss core offer low cost and high saturation flux density. The inductors can be versatile combination by series or parallel connections. Applications include DC-DC converters, Buck, Boost, forward, resonant converters. Also apply to computer and Portable power devices, LCD panels, DVD players Noise filtering Chokes, 1:1 Transformers.



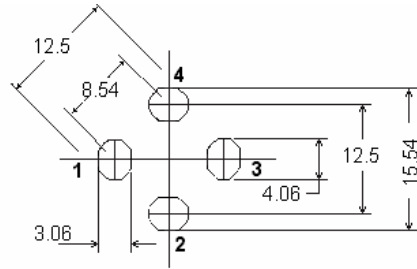
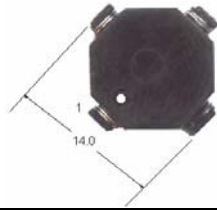
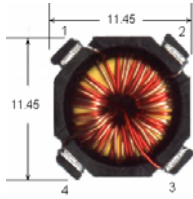
| Part Number | Parallel | | | | Series | | | |
|--------------|--------------|------------------|-------------|---------------|--------------|------------------|-------------|---------------|
| | OCL (uH)±20% | DC Bias (uH) min | ADC (A) min | DCR (ohm) max | OCL (uH)±20% | DC Bias (uH) min | ADC (A) min | DCR (ohm) max |
| MTC1148-A01 | 0.42 | 0.30 | 5.50 | 0.005 | 1.67 | 1.25 | 2.75 | 0.022 |
| MTC1148-A02 | 0.60 | 0.43 | 5.10 | 0.006 | 2.40 | 1.74 | 2.55 | 0.025 |
| MTC1148-A03 | 1.07 | 0.71 | 4.50 | 0.008 | 4.28 | 2.92 | 2.25 | 0.032 |
| MTC1148-A04 | 2.02 | 1.36 | 3.40 | 0.013 | 8.08 | 5.44 | 1.70 | 0.054 |
| MTC1148-A05 | 4.83 | 3.35 | 2.00 | 0.040 | 19.30 | 13.47 | 1.00 | 0.165 |
| MTC1148-A06 | 8.08 | 5.31 | 1.80 | 0.052 | 32.33 | 21.23 | 0.90 | 0.21 |
| MTC1148-A07 | 9.60 | 6.23 | 1.70 | 0.057 | 38.48 | 24.94 | 0.85 | 0.23 |
| MTC1148-A07H | 9.83 | 6.73 | 2.10 | 0.045 | 39.30 | 26.92 | 1.05 | 0.179 |
| MTC1148-A08 | 15.03 | 9.60 | 1.40 | 0.087 | 60.12 | 38.47 | 0.70 | 0.35 |
| MTC1148-A09 | 20.46 | 14.10 | 1.00 | 0.160 | 81.83 | 56.47 | 0.50 | 0.64 |
| MTC1148-A10 | 25.40 | 17.00 | 0.96 | 0.177 | 101.60 | 68.29 | 0.48 | 0.71 |
| MTC1148-A11 | 32.33 | 22.20 | 0.80 | 0.250 | 129.30 | 89.06 | 0.40 | 1.02 |
| MTC1148-A12 | 50.52 | 33.50 | 0.70 | 0.320 | 202.10 | 134.2 | 0.35 | 1.27 |
| MTC1148-A13 | 68.40 | 43.60 | 0.66 | 0.370 | 273.60 | 174.6 | 0.33 | 1.49 |
| MTC1148-A14 | 99.00 | 63.60 | 0.54 | 0.557 | 396.00 | 254.5 | 0.27 | 2.23 |
| MTC1148-A15 | 150.70 | 96.60 | 0.44 | 0.850 | 602.80 | 386.5 | 0.22 | 3.38 |
| MTC1148-A16 | 198.40 | 130.70 | 0.36 | 1.210 | 793.70 | 523.1 | 0.18 | 4.84 |
| MTC1148-A17 | 299.87 | 190.00 | 0.32 | 1.530 | 1199.5 | 760.2 | 0.16 | 6.10 |

- Storage temperature range $-40^{\circ}\text{C} \sim +125^{\circ}\text{C}$
- Resistance to solder temperature $+240^{\circ}\text{C}$ for 30 sec.
- Inductance range : 0.42uH ~ 300uH
- Operating ambient temperature range $-40^{\circ}\text{C} \sim +85^{\circ}\text{C}$



MTC1150-H Series, Dual SMT magnetic that can be used single or coupled inductors. Also can be used To 1:1 transformers (provide isolation between two windings), The series are Designed secure 4 Terminal Mounting, Low loss and high frequency. The inductors versatile Combination by series, parallel connections.

Applications include DC-DC converters, Buck, Boost, forward, resonant converters. Also apply to computer and portable power devices, LCD panels, DVD players. Noise Filter, Chokes,



| Part Number | Parallel | | | | Series | | | |
|-------------|--------------|------------------|-------------|---------------|--------------|------------------|-------------|---------------|
| | OCL (uH)±20% | DC Bias (uH) min | ADC (A) min | DCR (ohm) max | OCL (uH)±20% | DC Bias (uH) min | ADC (A) min | DCR (ohm) max |
| MTC1150-H01 | 0.492 | 0.37 | 7.9 | 0.005 | 1.95 | 1.49 | 3.95 | 0.019 |
| MTC1150-H02 | 0.761 | 0.56 | 7.2 | 0.006 | 3.05 | 2.24 | 3.60 | 0.023 |
| MTC1150-H03 | 1.11 | 0.81 | 5.9 | 0.008 | 4.39 | 3.24 | 2.95 | 0.033 |
| MTC1150-H04 | 1.96 | 1.415 | 4.6 | 0.014 | 7.82 | 5.69 | 2.30 | 0.055 |
| MTC1150-H05 | 5.15 | 3.562 | 3.3 | 0.027 | 20.62 | 14.23 | 1.65 | 0.107 |
| MTC1150-H06 | 7.82 | 5.152 | 3.0 | 0.033 | 31.23 | 20.61 | 1.50 | 0.131 |
| MTC1150-H07 | 9.89 | 6.705 | 2.5 | 0.047 | 39.54 | 26.79 | 1.25 | 0.187 |
| MTC1150-H08 | 14.77 | 9.522 | 2.3 | 0.057 | 59.05 | 38.10 | 1.15 | 0.228 |
| MTC1150-H09 | 20.62 | 13.44 | 1.9 | 0.084 | 82.45 | 53.70 | 0.95 | 0.337 |
| MTC1150-H10 | 25.66 | 17.17 | 1.6 | 0.115 | 102.6 | 68.68 | 0.80 | 0.461 |
| MTC1150-H11 | 33.21 | 22.94 | 1.3 | 0.166 | 132.9 | 91.72 | 0.65 | 0.662 |
| MTC1150-H12 | 48.82 | 32.21 | 1.2 | 0.201 | 195.2 | 128.83 | 0.60 | 0.805 |
| MTC1150-H13 | 67.37 | 43.04 | 1.1 | 0.238 | 269.4 | 172.2 | 0.55 | 0.952 |
| MTC1150-H14 | 99.12 | 69.53 | 0.72 | 0.565 | 396.4 | 278.15 | 0.36 | 2.259 |
| MTC1150-H15 | 149.5 | 101.4 | 0.64 | 0.696 | 597.8 | 405.83 | 0.32 | 2.784 |
| MTC1150-H16 | 200.2 | 131.4 | 0.6 | 0.810 | 800.4 | 525.5 | 0.30 | 3.24 |
| MTC1150-H17 | 298.9 | 188.0 | 0.54 | 1.003 | 1196.7 | 752.1 | 0.27 | 4.011 |

- Storage temperature range -40°C ~+125°C
- Resistance to solder temperature +240 °C for 30 sec.
- Inductance range : 0.49uH ~ 300uH
- Operating ambient temperature range -40°C ~+85°C

