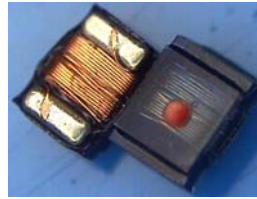


LSF0805 -Series (0805) Ferrite type

FEATURES

- Utilizing a miniaturized winding structure.
- These products provide high Q characteristics.
- Resin-coated surface enables excellent mounting
- Low DC resistance design is ideal for low loss.
- Precision inductance tolerance is available.



APPLICATIONS

- Personal computers, Hard disk drives
- xDSL modem and Cable modem
- Digital camera and other electronic equipment



PRODUCT IDENTIFICATION

LSF 0805 - 1R0 K - E

(1) (2) (3) (4) (5)

(1) Product name

(2) Dimension

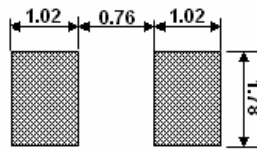
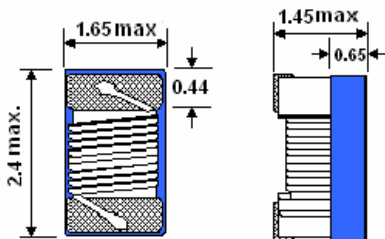
(3) Inductance : 1R0 : 1.0uH ; 100 : 10uH

(4) Tolerance: J : ±5% ; K : ±10%

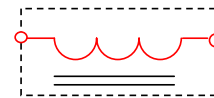
(5) Lead free, Rohs compliant

SHAPES AND DIMENSIONS (mm)

RECOMMENDED FOOTPRINT



Equivalent circuit



No Polarity

LSF0805- Series (0805)

Our Product Part Number	Inductance (uH)/MHz	Inductance tolerance	Q Min.	SRF(Min.) (MHz)	Rdc(Ω) Max.	Irms(mA)	Color Coding
LSF0805-R18□-E	0.18/25	J.K	30/25	1400	0.30	1400	Black
LSF0805-R22□-E	0.22/25	J.K	30/25	830	0.32	1350	Brown
LSF0805-R27□-E	0.27/25	J.K	30/25	800	0.38	1300	Red
LSF0805-R33□-E	0.33/25	J.K	30/25	800	0.42	1200	Orange
LSF0805-R39□-E	0.39/25	J.K	30/25	700	0.46	1160	Yellow
LSF0805-R47□-E	0.47/25	J.K	30/25	690	0.50	1100	Green
LSF0805-R56□-E	0.56/25	J.K	30/25	640	0.53	1040	Blue
LSF0805-R68□-E	0.68/25	J.K	30/25	510	0.68	900	Violet
LSF0805-R82□-E	0.82/25	J.K	30/25	500	0.70	900	Gray
LSF0805-1R0□-E	1.0/7.9	J.K	25/7.9	470	0.72	840	White
LSF0805-1R2□-E	1.2/7.9	J.K	25/7.9	420	0.88	800	Black
LSF0805-1R5□-E	1.5/7.9	J.K	25/7.9	400	1.00	720	Brown
LSF0805-1R8□-E	1.8/7.9	J.K	25/7.9	250	1.00	660	Red
LSF0805-2R2□-E	2.2/7.9	J.K	25/7.9	200	1.05	600	Orange
LSF0805-2R7□-E	2.7/7.9	J.K	25/7.9	130	1.18	500	Yellow
LSF0805-3R3□-E	3.3/7.9	J.K	25/7.9	160	1.26	480	Green
LSF0805-3R9□-E	3.9/7.9	J.K	25/7.9	130	1.75	440	Blue
LSF0805-4R7□-E	4.7/7.9	J.K	25/7.9	120	1.87	390	Violet
LSF0805-5R6□-E	5.6/7.9	J.K	25/7.9	90	2.00	340	Gray
LSF0805-6R8□-E	6.8/7.9	J.K	25/7.9	55	2.15	300	White
LSF0805-8R2□-E	8.2/7.9	J.K	25/7.9	40	2.37	280	Black
LSF0805-100□-E	10/2.5	J.K	16/2.5	40	2.45	260	Brown
LSF0805-120□-E	12/2.5	J.K	16/2.5	37	2.80	220	Red
LSF0805-150□-E	15/2.5	J.K	16/2.5	30	3.80	200	Orange
LSF0805-180□-E	18/2.5	J.K	16/2.5	23	4.48	180	Yellow
LSF0805-220□-E	22/2.5	J.K	16/2.5	20	6.30	160	Green
LSF0805-270□-E	27/2.5	J.K	16/2.5	19	6.85	140	Blue
LSF0805-330□-E	33/2.5	J.K	16/2.5	18	7.60	120	Violet

1. When ordering, please specify tolerance and packaging codes. Ex: LSF0805-100J-E

Tolerance : J = ±5% , K = ±10%

Packaging : Clear tape and reel { standard }. *

2. L , Q : Agilent/HP E4991A+ Agilent/HP16197A

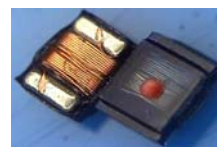
3. SRF : Agilent/E5071B / Agilent/HP E4991A

4. Rdc : DIGITAL MILLIOHM METER Chroma 16502, or equivalent.

5. I_{rms} for a 15°C rise above 25°C ambient.

6. Operating temperature range from -25°C to 85°C.

* Parts/Reel: 7" 2,000 Tape Width: 8mm



LSF0805 Characteristics (L,Q vs. Frequency)

