

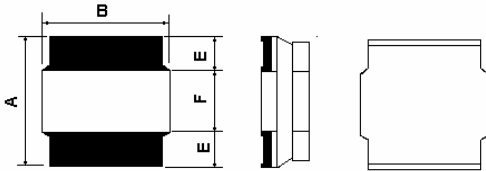
**Application Field**

- Personal computers.
- Disk Drives and computer peripherals.
- DC Power supply circuit.
- For Small DC-DC converter (cellular phone, HDD,DVC,DSC,PDA,LCD disply etc)

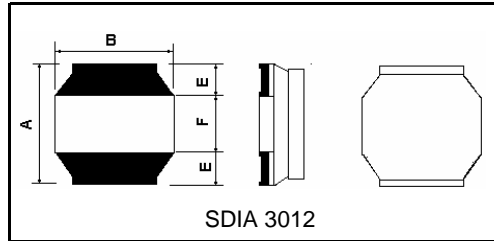
**Features**

- Low DC resistance, High current capacity and high impedance characteristics
- Excellent solder heat resistance, Both flow and reflow soldering methods can be employed.

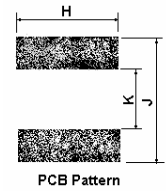
**Dimensions and footprint (unit:mm)**



SDIA3010, SDIA4012,SDIA4018,SDIA6012  
SDIA8020, SDIA8025,SDIA8040



SDIA 3012

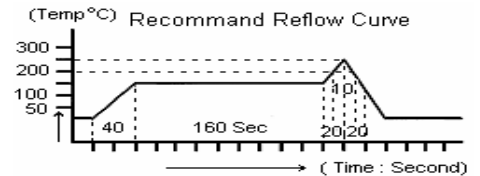


PCB Pattern

Type	A	B	C	D	E	F	H	J	K
SDIA3010	3.0± 0.2	3.0± 0.2	1.0 max		0.9	2.0	3.7	3.7	1.2
SDIA3012	3.0± 0.2	3.0± 0.2	1.2 max		0.9	2.0	3.7	3.7	1.2
SDIA4012	4.0 ± 0.2	4.0 ± 0.2	1.2 max		1	2.0	4.6	4.6	1.6
SDIA4018	4.0 ± 0.2	4.0 ± 0.2	1.8 max		1	2.0	4.6	4.6	1.6
SDIA6012	6.0 ± 0.2	6.0 ± 0.2	1.2max		0.9	4.21	6.7	6.7	3.5
SDIA8020	8.0± 0.2	8.0 ± 0.2	2.0 max		1.6	4.8	8.7	8.7	4.3
SDIA8025	8.0± 0.2	8.0 ± 0.2	2.5 max		1.6	4.8	8.7	8.7	4.3
SDIA8040	8.0± 0.2	8.0 ± 0.2	4.0 max		1.6	4.8	8.7	8.7	4.3

**General Specification:**

1. Storage temp: -40°C ~ +125°C
2. Operating temp: -25°C ~ +105°C
3. Resistance to solder heat : 250°C 10secs





## SDIA6012- Series , SDIA46020-Series

Part No	Inductance	SDIA6012		SDIA6020	
		RDC(Ω)Max	IDC(A)Min	RDC(Ω)Max	IDC(A)Min
1R0	1.0				
1R5	1.5			0.031	4.000
1R8	1.8				
2R2	2.2			0.041	3.200
2R7	2.7				
3R0	3.0	0.110	1.19		
3R3	3.3	0.120	1.17	0.048	2.800
3R5	3.5				
3R9	3.9				
4R7	4.7	0.140	0.95	0.070	2.400
5R3	5.3	0.150	0.90		
5R6	5.6	0.160	0.83		
6R8	6.8	0.198	0.80	0.102	2.000
8R2	8.2				
100	10	0.288	0.75	0.150	1.700
120	12	0.360	0.60		
150	15	0.396	0.58		
180	18				
220	22	0.66	0.48		
270	27				
330	33	0.95	0.39		
390	39				
470	47	1.356	0.32		
560	56				
680	68	1.62	0.22		
820	82				
101	100	2.626	0.19		
121	120				
151	150				
181	180				
221	220				
331	330				
391	390				
471	470				
561	560				

**SDIAxxxx-xxxK-E Code "-E" : Lead free process and RoHs compliant**

Inductance tolerance : N±30% M±20% L±15% K±10% J±5% IDC :  $\Delta L / L (0A) \leq 10\%$

Frequency : 0.1μH ~ 8.2μH @ 100KHz / 0.25V, 10μH ~ 820μH / 1KHz / 0.25V



## SDIA8020-Series , SDIA8025-Series-SDIA8040-Series

Part No	Inductance L(μH)	SDIA8020		SDIA8025		SDIA8040	
		RDC(Ω)Max	IDC(A)Min	RDC(Ω)Max	IDC(A)Min	RDC(Ω)Max	IDC(A)Min
1R0	1.0			0.016	8.16		
1R5	1.5			0.024	6.80		
1R8	1.8						
2R2	2.2	0.05	4.50	0.032	5.85	0.017	7.330
2R7	2.7						
3R0	3.0			0.040	4.90		
3R3	3.3	0.06	4.10			0.220	5.930
3R5	3.5						
3R9	3.9			0.049	4.31		
4R7	4.7	0.085	3.60	0.058	3.85	0.023	4.700
5R3	5.3						
5R6	5.6						
6R8	6.8	0.12	2.94	0.071	3.40	0.033	4.000
8R2	8.2			0.086	3.04		
100	10	0.22	2.50	0.11	2.60	0.044	3.400
120	12	0.23	2.20	0.13	2.40	0.055	3.050
150	15	0.25	2.00	0.14	2.26	0.065	2.700
180	18			0.18	1.97		
220	22	0.37	1.60	0.23	1.80	0.086	2.200
270	27			0.28	1.64		
330	33	0.55	1.30	0.34	1.49	0.130	1.900
390	39			0.41	1.37		
470	47	0.820	1.15	0.49	1.24	0.200	1.500
560	56			0.56	1.14		
680	68	1.11	0.94	0.66	1.02	0.300	1.200
820	82			0.83	0.94		
101	100	1.90	0.70	1.06	0.85	0.380	1.000
121	120			1.19	0.78		
151	150			1.51	0.70		
181	180			1.81	0.63		
221	220			2.01	0.58		
271	270			2.61	0.54		
331	330			2.97	0.49		
391	390			3.73	0.43		
471	470			4.21	0.39		
561	560			5.28	0.35		
681	680			6.73	0.33		
821	820			8.02	0.30		
102	1000			10.19	0.27		

## SDIAxxxx-xxxK-E Code "-E" : Lead free process and RoHs compliant

Inductance tolerance : N±30% M±20% L±15% K±10% J±5% IDC :  $\Delta L / L (0A) \leq 10\%$ 

Frequency : 1μH ~ 8.2μH @ 100KHz / 0.25V, 10μH ~ 1000μH / 1KHz / 0.25V